

The new nursing proficiencies are presented under seven platforms, followed by two annexes:

1. Being an **accountable** professional
2. **Promoting health** and preventing ill health
3. **Assessing** needs and **planning care**
4. Providing and **evaluating care**
5. **Leading and managing** nursing care and working in teams
6. Improving **safety and quality** of care
7. **Coordinating** care

### Annex A

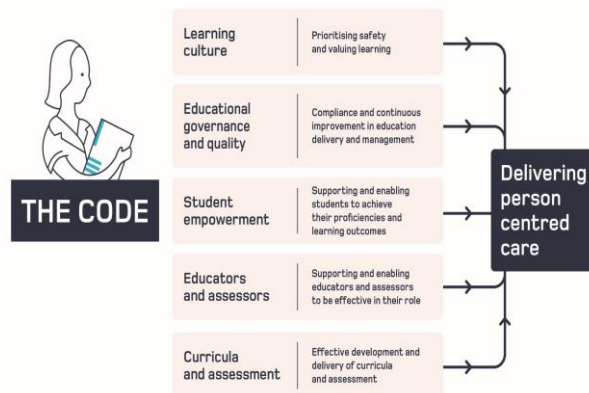
Communication & Relationship Management Skills

### Annex B

Nursing Procedures

## Education and training

NMC  
Nursing &  
Midwifery  
Council



## Future Nurse Future Midwife

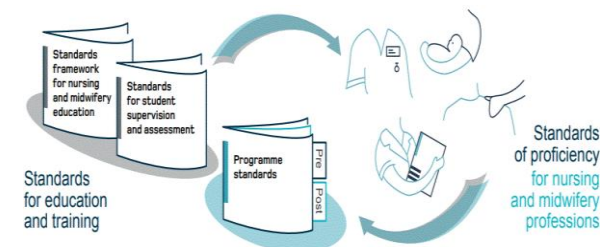
New NMC education standards to shape Nursing and Midwifery for future generations

For more information visit:



<https://www.nmc.org.uk/standards-for-education-and-training/standards-framework-for-nursing-and-midwifery-education/>

<http://www.nipec.hscni.net/work-and-projects/stds-of-ed-amg-nurs-mids/future-nurse-future-midwife/>



Please note: the information in this leaflet is adopted from the NMC website

 <https://www.facebook.com/nipec/>

 @nipec\_online

If you would like to be included in FNFM communications and updates please send an email to [Lheanna.Kent@nipec.hscni.net](mailto:Lheanna.Kent@nipec.hscni.net)

## Introduction

In May 2018 the NMC published new education standards to shape the future of nursing and midwifery for future generations. The new education standards aim to:

- raise the ambition in terms of what's expected of a nurse and midwife<sup>1</sup> at the point of registration
- maximise the quality and safety of nursing and midwifery education and training.

The education standards will commence in NI from September 2020 and will have significant implications for nurses, midwives, employers, educators, students and those who support students in practice.

## Why Change?

- Health and care landscapes are changing rapidly
- Increased care provided by integrated care teams
- Growing focus on person-centred care closer to home
- Nurses and midwives taking on additional responsibilities
- Increased use of technology
- Nurses and midwives working across a range of settings.

---

<sup>1</sup> To note Future Midwife Proficiency Standards are currently out for a period of consultation which closes on 9<sup>th</sup> May 2019

## Standards Framework for Nursing and Midwifery Education

### Main Changes

- Clearly defined lay out
- Measurable, outcome focussed
- Strengthened emphasis on effective partnerships between Approved Education Institutions (AEI's) and practice placement partners
- Increased focus on areas such as the learning culture, safety, equality and diversity, service user involvement and inter-professional working.

## Standards for Student Supervision and Assessment

### New roles have emerged including:

- Nominated Person
- Practice Assessor
- Practice Supervisor
- Academic Assessor

### Why new roles?

- Separate supervision and assessment roles
- Increase consistency in assessment
- Avoid "failure to fail"
- Improve interprofessional working
- Enhance joint working between AEI's and practice placement partners
- Supporting students becomes everyone's responsibility (as enshrined in the Code)
- Everyone will have an input to assessment.

## Standards for Pre-Registration Nursing Programmes

### Main Changes

- More flexibility for AEIs and practice placement partners in how they design deliver and manage programmes
- Potential for innovation through simulation
- Better explanation of supernumerary
- Students will have an increased leadership role in management and delivery of care
- Inclusion of prescribing theory
- Clear relationship to standards of proficiency.

## Standards of Proficiency for Registered Nurses

### Main Changes

- Evidence-based, person-centred approach to mental and physical care
- One set of proficiencies that apply to all fields of nursing – however registration to a specific field(s) of nursing practice continues
- Precise skills and procedure annexes that apply to all fields of nursing with greater emphasis & depth of knowledge as appropriate to the student's intended field of practice
- Increased focus on public health and supporting health and lifestyle choices
- Readiness to deliver future care at home or closer to home settings.