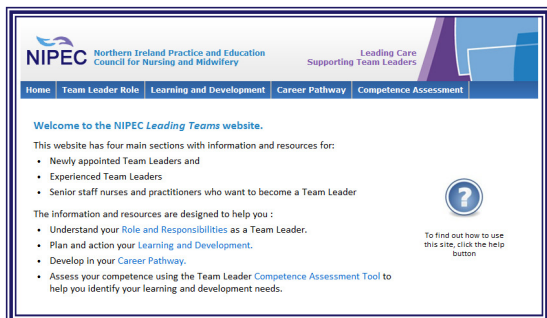


# LEADING TEAMS IMPLEMENTATION PROJECT

NIPEC has created a mini website for Community Team Leaders and those interested in the role, in order to provide easy access to the resources that are specifically developed for them: [www.nipec.hscni.net/teamleader](http://www.nipec.hscni.net/teamleader)



## Resources on the Website

- Team Leader Role
- Learning and Development Framework
- Competence Assessment Tool
- Career Pathway Framework

## PROFESSIONAL OFFICERS

The aim of this project is to promote awareness and assist with implementation of the Team Leader resources. Professional Officers have also been appointed in three of the Trusts: Amanda McLean in Belfast HSC Trust, Nicola McKay in Northern HSC Trust and Lesley Reid in South Eastern HSC Trust. The Professional Officers are facilitating awareness sessions in their Trusts and you can contact them by email or telephone to find out more information as well as give your views on the Team Leader resources. You can also get more information about the Team Leader resources on your Trust intranet.

The Southern HSC Trust and Western HSC Trusts are in the process of recruiting Professional Officers into these roles.

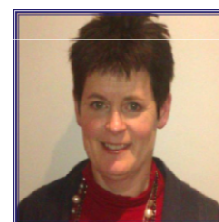
### Professional Officers Contact Details



Lesley Reid  
[Lesley.reid1@setrust.hscni.net](mailto:Lesley.reid1@setrust.hscni.net)  
07912046338



Nicola McKay  
[Nicola.mckay@notherntrust.hscni.net](mailto:Nicola.mckay@notherntrust.hscni.net)  
02820762666



Amanda McLean  
[Amanda.mclean@belfasttrusthscni.net](mailto:Amanda.mclean@belfasttrusthscni.net)  
02820762666

### Competence Assessment Tool for Team Leaders

Remember to use the **Competence Assessment Tool** to help you prepare for your appraisal or career development and supervision meetings. You can print off a hard copy of the tool from the website [www.nipec.hscni.net/teamleader](http://www.nipec.hscni.net/teamleader)

**Let us know if you have any other ideas on how to improve the Team Leader mini website.**

Please complete the **Evaluation Questionnaire** on NIPEC's website or on your Trust intranet: Alternatively the Professional Officer within your Trust will provide you with a questionnaire. It should take you no more than 10 minutes to complete.

### Competence Assessment Tool

#### DOMAIN 1: SAFE AND EFFECTIVE PRACTICE

- 1.1 Professional, ethical and legal
- 1.2 Evidence-based practice
- 1.3 Safeguarding
- 1.4 Multi-professional/Multi-agency working

#### DOMAIN 2: ENHANCING THE PATIENT/CLIENT EXPERIENCE

- 2.1 Person-centred care
- 2.2 Coordination of the patient journey
- 2.3 Patient/client involvement

#### DOMAIN 3: LEADERSHIP AND MANAGEMENT

- 3.1 Role model
- 3.2 Develop team performance
- 3.3 Manage the service delivery setting
- 3.4 Effective use of resources

#### DOMAIN 4: DELIVERY OF ORGANISATIONAL OBJECTIVES

- 4.1 Continuous quality and improvement
- 4.2 Service improvement, development and modernisation
- 4.3 Staff management

### A DATE FOR YOUR DIARY

#### Ward Sister / Charge Nurse and Team Leader Conference

WEDNESDAY 17<sup>th</sup> April 2013

Venue at Kings Hall Belfast

